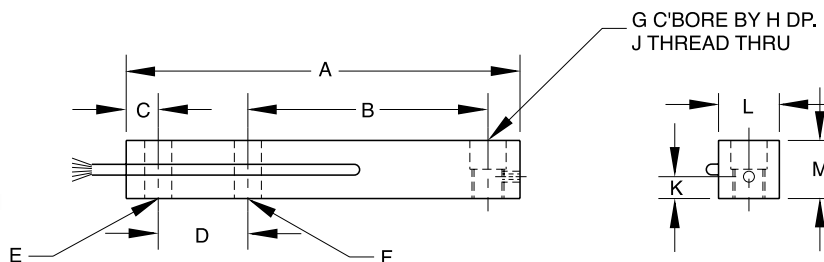


BLF Single-Ended Beam, Stainless Steel



RATED CAPACITY

lb/inches
1500-2500
5000

| | DIMENSIONS | | | | | | | | | | | |
|-------|------------|-----|------|-----|-----|-----|-----|------------|-----|------|------|---|
| | A | B | C | D | E | F | G | H | J | K | L | M |
| 9.00 | 6.00 | .62 | 1.75 | .59 | .53 | .69 | .56 | 5/8-18 UNF | .31 | 1.19 | 1.13 | |
| 10.00 | 6.25 | .75 | 2.00 | .84 | .78 | .94 | .50 | 7/8-14 UNF | .50 | 1.44 | 1.44 | |

kg/mm
680.4-1134.0
2268.0

| | | | | | | | | | | | |
|-------|-------|------|------|------|------|------|------|------------|------|------|------|
| 228.6 | 152.4 | 15.8 | 44.5 | 14.9 | 13.5 | 17.5 | 14.2 | 5/8-18 UNF | 7.9 | 30.2 | 28.7 |
| 254.0 | 158.8 | 19.1 | 50.8 | 21.3 | 19.8 | 23.9 | 12.7 | 7/8-14 UNF | 12.7 | 36.6 | 36.6 |

SPECIFICATIONS:

Full Scale Output: 2.0 mV/V
Bridge Resistance: 1000 ohms, nominal
Material/Finish: Stainless steel
Temperature: Compensated range
 0°F to 150°F/-18°C to 65°C
Manufacturer:
Model Number: BLF-XX-15100
Safe Overload: 150% Full scale
Rated Excitation: 10V DC (15V maximum)
Nonlinearity: 0.03% Full scale

Hysteresis: 0.02% Full scale
Insulation Resistance: 5000 megohms
Seal Type: Environmentally sealed
Cable Length: 15'4.6 m
Cable Color Code: Green..... + Excitation
 Black..... - Excitation
 White..... + Signal
 Red..... - Signal
 Yellow..... Shield
Warranty: 1-year limited warranty

INTERCHANGEABLE PRODUCTS

Manufacturer

Model

Fairbanks® 3-53581-X, 3-52921-1